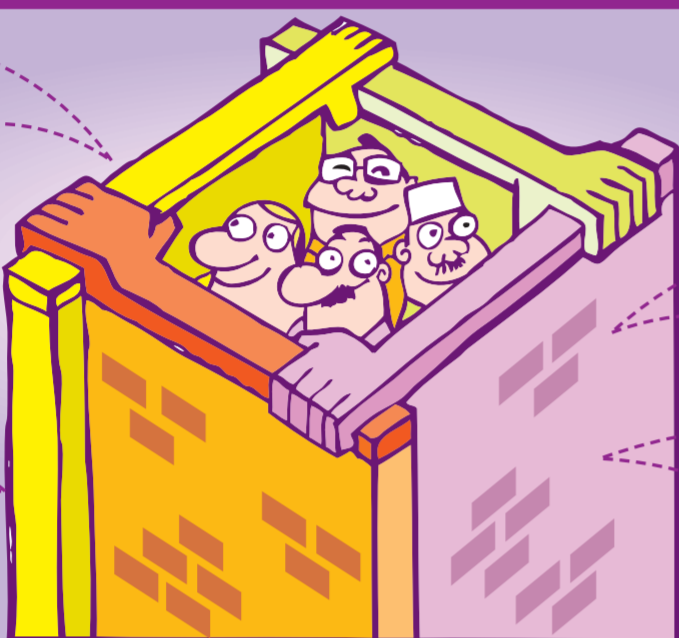




COMMUNITY ENGAGEMENT PROGRAMME

www.singaporeunited.sg

WHAT?



A NETWORK OF PEOPLE TO MINIMISE CONFLICT

The CEP brings together Singaporeans to develop trust and understanding, and take part in response plans that deal with potential communal tensions after a crisis.

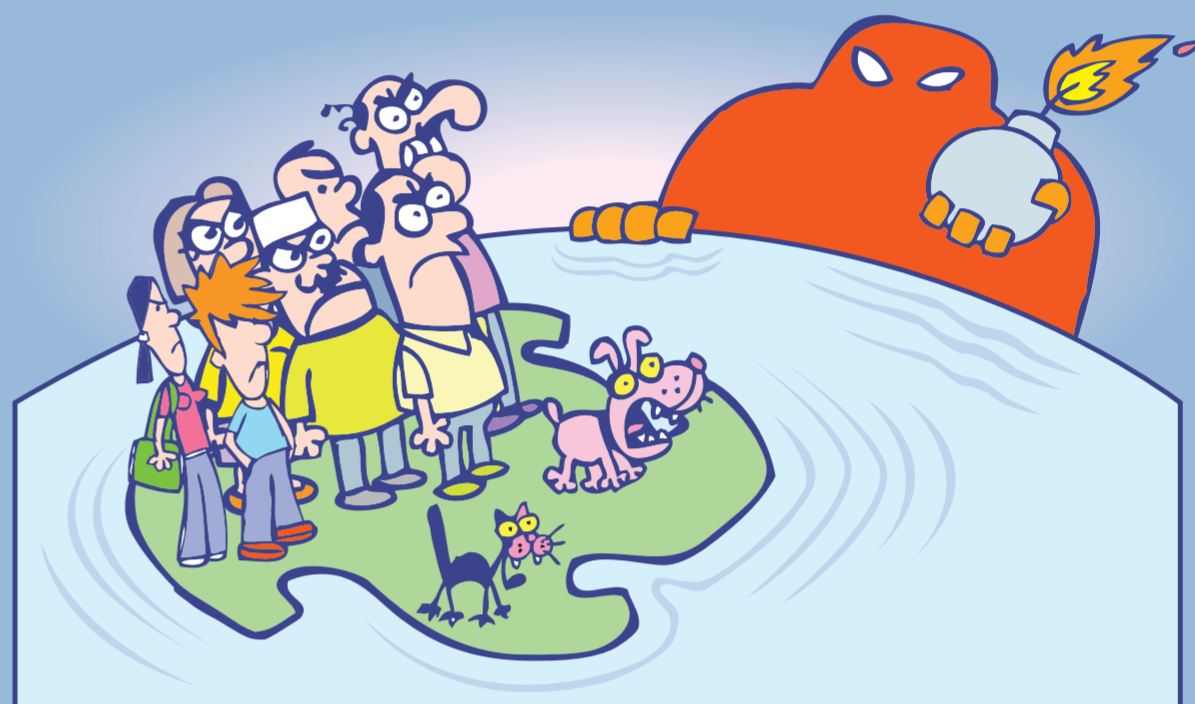
RESPONSE PLANS TO COPE WITH CRISES

The community has to draw up response plans to help Singaporeans cope and stay united in a crisis situation.

MORE THAN JUST COUNTER-TERRORIST EMERGENCY PLANNING

A crisis, such as a terrorist incident, may lead to misunderstanding and tensions in our multi-ethnic, multi-religious society. The CEP seeks to keep us strong and united during and after a crisis, so we can continue to live together in harmony.

WHY?

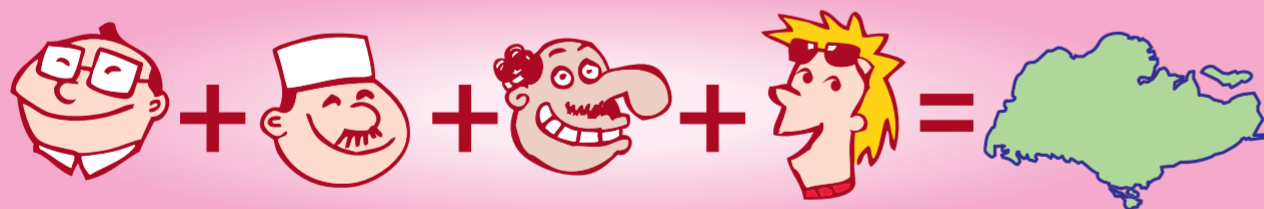


SINGAPORE FACES TERRORIST THREATS

The September 11 attack in the U.S. in 2001 and subsequent attacks around the world have shown that terrorism today is largely linked to religious extremism. Such attacks can destroy trust, confidence and harmony amongst communities.

We must be ready to manage the impact on communal relations should terrorists strike in Singapore. We must never take for granted the trust and harmony we enjoy today.

WHO?



YOU CAN MAKE A DIFFERENCE

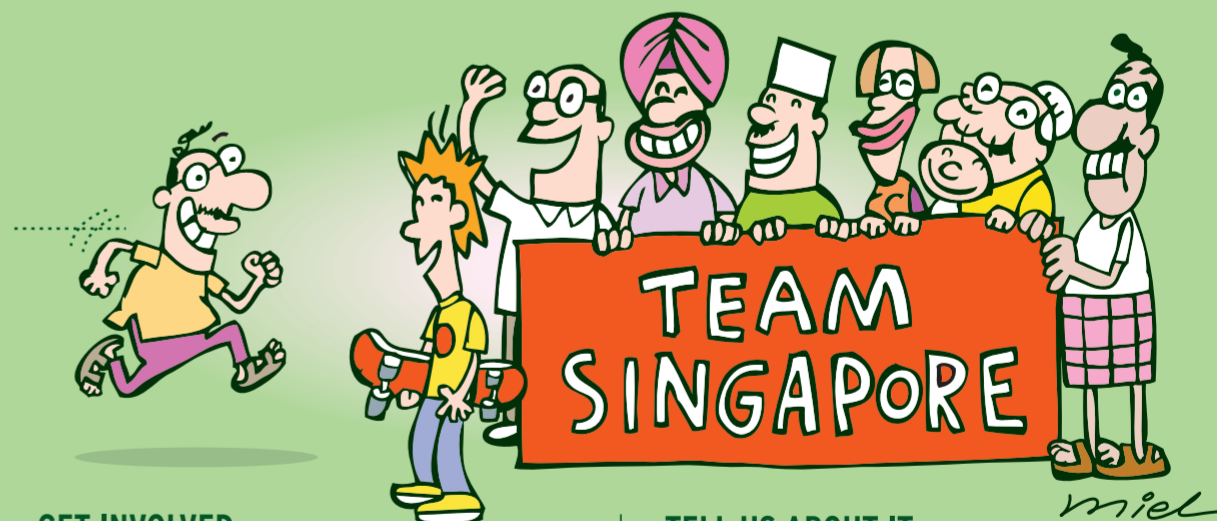
Your contribution is crucial to build a united and resilient society. You can organise or take part in activities to strengthen understanding and build ties between communities, while the government coordinates these efforts.

The CEP is led by a Ministerial Committee chaired by the Deputy Prime Minister and Minister for Home Affairs, Mr Wong Kan Seng. The Ministry of Home Affairs is the overall coordinating agency, with five government agencies responsible for engaging the community clusters:

CLUSTER	SUPPORTING AGENCY
Religious groups, ethnic-based organisations and voluntary welfare organisations	Ministry of Community Development, Youth and Sports
Educational institutions	Ministry of Education
Media and the Arts	Ministry of Information, Communications and the Arts
Businesses and unions	Ministry of Manpower
Grassroots organisations	People's Association

We will facilitate networking within and across clusters so people know one another well. This means that in a crisis, people will respond not as strangers calling each other, but as people who have met, discussed and exercised plans together.

HOW?



GET INVOLVED

We all have a role to play. Through the CEP, we can:

- Foster greater understanding amongst our communities;
- Gain personal understanding of our roles in a crisis;
- Get involved through training; and
- Participate in exercises to get ourselves prepared to respond.

For a start, we need to strengthen bonds with our neighbours at home, colleagues at work, and friends at school and at play.

TELL US ABOUT IT

Do you want to be involved in the CEP, or have any ideas to share with us? If so, contact us now!

CEP Secretariat
Email:
singaporeunited@mha.gov.sg



Forging Unity, Building Resilience